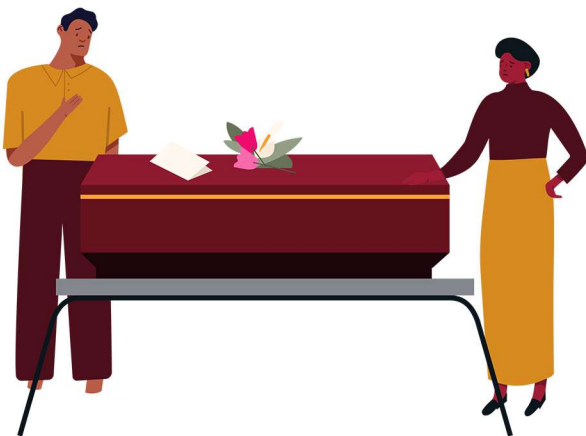




Ungenza uhlelo ne-SASSA ukuthi ikhava yakho yomngcwabo (ngokoMthethonqubo 26A wezokudonswa kwemali) idonswe ngaphambi kokuba isibonelelo sakho sidluliselwe ku-SASSA/SAPO SDA noma ku akhawunti yakho yasebhange.



Uma unemibuzo mayelana nesibonelelo sakho, xhumana ne-SASSA kulayini wabo wamahhala ku **08600-601-011**.



Uma unenkinga yokuthola usizo kwa -SASSA, xhumana ne-Black Sash ukuthola usizo lomthetho nokuboniswa ku **072-663-3739**.



072-66 33 739
help@blacksash.org.za

Ungathumela ne-imeyili enemibuzo yakho ku help@blacksash.org.za.



BLACKSASH
MAKING HUMAN RIGHTS REAL

Izindlela ezimbili zokuthola isibonelelo sakho

#knowyourrights



BLACKSASH
MAKING HUMAN RIGHTS REAL

Ningizimu Afrika inohlelo oluhlelekile lwezenhlalakahle, futhi abantu abayizigidi eziyi-17 bayahlomula kulezi zibonelelo nyanga zonke.

Kulokhu, imali engaphezu kwezigidi eziyi-12 iba yiziBonelelo zokuSaphotha iziNgane, izgidi ezi-3 ezabantu abaGugile bese isigidi esi-1 eseziBonelelo zabaKhubazekile.

Izibonelelo zilawulwa yi-South African Social Security Agency, eyaziwa ngokuthi yi- SASSA.

IsiGaba sama-27 soMthethosisekelo sazisa ilungelo lokuthi wonke umuntu “anakekelwe emphakathini, kubandakanywa , ukuthi uma bengakwazi ukuzinakekela bona noma abathembele kubo, ukuxhaswa komphakathi okufanele”.



Uma isicelo sakho sokuthola isibonelelo sibe yimpumelelo, kunezindlela ezimbili ongahola ngazo:

1. Yi- akhawunti ebizwa nge-SASSA/SAPO Special Disbursement Account (SDA):

Lelikhadi elisha elibizwa nge-SASSA/SAPO linalezi zinsiza zamahhala:

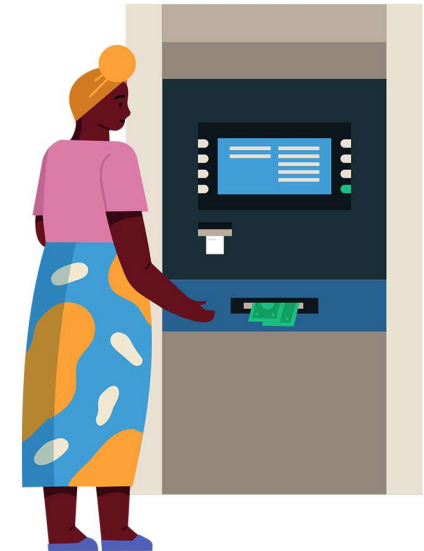
- Ungakhipha imali kathathu ngenyanga ezitolo;
- Isitatimende esifishane esisodwa ngenyanga;
- Ungakhipha imali egatsheni lakwa-SAPO noma ezindaweni zokuhola kwemali kanye ngenyanga;
- Unganikezwa elinye ikhadi le-SASSA/SAPO kanye kuphela;
- Isitatimende sezinyanga ezintathu egatsheni lwakwa-SAPO ngenyanga;
- Ukushintshwa kwephini egatsheni lakwa-SAPO njalo ngonyaka;
- Ungabheka ukuthi unamalini esele ekhadini emshinini wemali kanye ngenyanga;
- Iphini elingenamkhawulo lishintsha emahhovisi e-SASSA.

Ukufaka isicelo se akhawunti ye-SASSA/SAPO SDA, letha umazisi wakho kunoma yiliphi ihhovisi lakwa -SASSA, eposni noma ezikhungweni zomphakathi.

Kubalulekile ukuthin ubuze kwa-SASSA mayelana nemiGomo nemiBandela ebhalwe phansi emayelana ne akhawunti ye-SASSA/SAPO.

Ikhadi le-SASSA/SAPO alivumeli ama-derbit oda noma ukudonswa kwemali.

ATM



2. I-akhawunti yakho yasebhange

- Ukuze kuphasiswe lendlela yokuhola, kufanele unikeze i-SASSA imvumo ebhalwe phansi futhi nangobuso ngobuso.
- Uzokhokha izindleko zebhange ezijwayelekile , njengezokunakekelwa kwe-akhawunti, izindleko zebhange ezijwayelekile, izitatimende, ukushintshwa kwephini kanye nokunikwa amakhadi amasha lapho kunesidingo.
- Uma ungakwazi ukuletha imvumo yakho ebhalwe phansi mathupha, ungahlela ne-SASSA ukuthi ize kuwe.